



License No. 800025015
FL License # CMTL-0003
CLIA No. 10D1094068

Certificate of Analysis

Compliance Test

ABSOLUTE NATURE CBD
539 W. COMMERCE #786
DALLAS, TX 75208

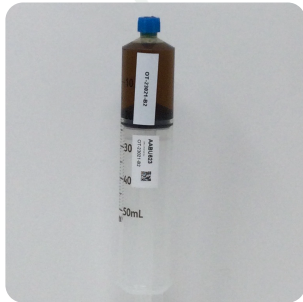
Batch # OT-23021-B2
Batch Date: 2021-08-18
Extracted From: Hemp

Sampling Method: MSP 7.3.1
Test Reg State: Alaska

Order # ABS210823-040020
Order Date: 2021-08-23
Sample # AABU523

Sampling Date: 2021-08-26
Lab Batch Date: 2021-08-26
Completion Date: 2021-08-31

Initial Gross Weight: 50.583 g
Density: 0.983 g/ml



Product Image

Potency
Tested

Heavy Metals
Passed

Mycotoxins
Passed

Pesticides
Passed

Residual
Solvents
Passed

Listeria
Monocytogenes
Passed

Pathogenic
Passed

Potency Summary



Potency - 20

Specimen Weight: 85.520 mg

Tested
(HPLC)

Analyte	Dilution (1:n)	LOD (%)	LOQ (%)	Result (mg/ml)	(%)
CBD	10.000	0.000054	0.001	39.222	3.990
Delta-9 THC	10.000	0.000013	0.001	1.741	0.177
CBC	10.000	0.000018	0.001	1.095	0.111
CBT	10.000	0.0002	0.001	0.577	0.059
CBG	10.000	0.000248	0.001	0.478	0.049
CBNA	10.000	0.000095	0.001	0.326	0.033
CBN	10.000	0.000014	0.001	<LOQ	<LOQ
CBGA	10.000	0.00008	0.001	<LOQ	<LOQ
CBDA	10.000	0.00001	0.001	<LOQ	<LOQ
CBDV	10.000	0.000065	0.001	<LOQ	<LOQ
CBDVA	10.000	0.000014	0.001	<LOQ	<LOQ
THCV	10.000	0.000007	0.001	<LOQ	<LOQ
THCVA	10.000	0.000047	0.001	<LOQ	<LOQ
THCA-A	10.000	0.000032	0.001	<LOQ	<LOQ
Exo-THC	10.000	0.00023	0.001	<LOQ	<LOQ
CBL	10.000	0.000035	0.001	<LOQ	<LOQ
CBCA	10.000	0.000107	0.001	<LOQ	<LOQ
Delta-8 THC	10.000	0.000026	0.001	<LOQ	<LOQ
Delta-10 THC	10.000	0.000003	0.001	<LOQ	<LOQ
Delta-8 THCV	10.000	0.00004	0.001	<LOQ	<LOQ

Total THC 0.177%	Total CBD 3.990%
Total CBG 0.049%	Total CBN 0.029%
Other Cannabinoids 0.170%	Total Cannabinoids 4.415%

Xueli Gao
Ph.D., DABT
Lab Toxicologist

Aixia Sun
D.H.Sc., M.Sc., B.Sc., MT (AAB)
Lab Director/Principal Scientist



Definitions and Abbreviations used in this report: *Total CBD = CBD + (CBD-A * 0.877), *Total THC = THCA-A * 0.877 + Delta 9 THC, *CBG Total = (CBGA * 0.877) + CBG, *CBN Total = (CBNA * 0.877) + CBN, *Other Cannabinoids Total = CBC + CBDV + THCV + THCVA, *Total Detected Cannabinoids = CBD Total + CBG Total + CBN Total + THC Total + CBC + CBDV + THCV + THCVA, *Analyte Details above show the Dry Weight Concentrations unless specified as 12% moisture concentration. (mg/ml) = Milligrams per Milliliter, LOQ = Limit of Quantitation, LOD = Limit of Detection, Dilution = Dilution Factor (ppb) = Parts per Billion, (%) = Percent, (cfu/g) = Colony Forming Unit per Gram (cfu/g) = Colony Forming Unit per Gram, , LOD = Limit of Detection, (µg/g) = Microgram per Gram (ppm) = Parts per Million, (ppm) = (µg/g), (aw) = aw (area ratio) = Area Ratio, (mg/Kg) = Milligram per Kilogram, *Measurement of Uncertainty = +/- 5%



This report shall not be reproduced, without written approval, from ACS Laboratory. The results of this report relate only to the material or product analyzed. Test results are confidential unless explicitly waived otherwise. Accredited by a third-party accrediting body as a competent testing laboratory pursuant to ISO/IEC 17025 of the International Organization for Standardization.



License No. 800025015
FL License # CMTL-0003
CLIA No. 10D1094068

Certificate of Analysis

Compliance Test

ABSOLUTE NATURE CBD
539 W. COMMERCE #786
DALLAS, TX 75208

Batch # OT-23021-B2
Batch Date: 2021-08-18
Extracted From: Hemp

Sampling Method: MSP 7.3.1
Test Reg State: Alaska

Order # ABS210823-040020
Order Date: 2021-08-23
Sample # AABU523

Sampling Date: 2021-08-26
Lab Batch Date: 2021-08-26
Completion Date: 2021-08-31

Initial Gross Weight: 50.583 g
Density: 0.983 g/ml

H Heavy Metals

Specimen Weight: 248.300 mg

Passed
(ICP-MS)

Dilution Factor: 2.000

Analyte	LOQ (ppb)	Action Level (ppb)	Result (ppb)	Analyte	LOQ (ppb)	Action Level (ppb)	Result (ppb)
Arsenic (As)	100	1500	<LOQ	Cadmium (Cd)	100	500	<LOQ
Lead (Pb)	100	500	<LOQ	Mercury (Hg)	100	3000	<LOQ

Mycotoxins

Specimen Weight: 191.100 mg

Passed
(LCMS)

Dilution Factor: 7.849

Analyte	LOQ (ppb)	Action Level (ppb)	Result (ppb)	Analyte	LOQ (ppb)	Action Level (ppb)	Result (ppb)
Aflatoxin B1	6	20	<LOQ	Aflatoxin B2	6	20	<LOQ
Aflatoxin G1	6	20	<LOQ	Aflatoxin G2	6	20	<LOQ
Ochratoxin A	12	20	<LOQ				

Xueli Gao
Xueli Gao Lab Toxicologist
Ph.D., DABT

Aixia Sun
Aixia Sun Lab Director/Principal Scientist
D.H.Sc., M.Sc., B.Sc., MT (AAB)



Definitions and Abbreviations used in this report: *Total CBD = CBD + (CBD-A * 0.877), *Total THC = THCA-A * 0.877 + Delta 9 THC, *CBG Total = (CBGA * 0.877) + CBG, *CBN Total = (CBNA * 0.877) + CBN, *Other Cannabinoids Total = CBC + CBDV + THCV + THCV-A, *Total Detected Cannabinoids = CBD Total + CBG Total + CBN Total + THC Total + CBC + CBDV + THCV + THCV-A, *Analyte Details above show the Dry Weight Concentrations unless specified as 12% moisture concentration. (mg/ml) = Milligrams per Milliliter, LOQ = Limit of Quantitation, LOD = Limit of Detection, Dilution = Dilution Factor (ppb) = Parts per Billion, (%) = Percent, (cfu/g) = Colony Forming Unit per Gram (cfu/g) = Colony Forming Unit per Gram, , LOD = Limit of Detection, (µg/g) = Microgram per Gram (ppm) = Parts per Million, (ppm) = (µg/g), (aw) = aw (area ratio) = Area Ratio, (mg/Kg) = Milligram per Kilogram, *Measurement of Uncertainty = +/- 5%



This report shall not be reproduced, without written approval, from ACS Laboratory. The results of this report relate only to the material or product analyzed. Test results are confidential unless explicitly waived otherwise. Accredited by a third-party accrediting body as a competent testing laboratory pursuant to ISO/IEC 17025 of the International Organization for Standardization.



License No. 800025015
FL License # CMTL-0003
CLIA No. 10D1094068

Certificate of Analysis

Compliance Test

ABSOLUTE NATURE CBD
539 W. COMMERCE #786
DALLAS, TX 75208

Batch # OT-23021-B2
Batch Date: 2021-08-18
Extracted From: Hemp

Sampling Method: MSP 7.3.1
Test Reg State: Alaska

Order # ABS210823-040020
Order Date: 2021-08-23
Sample # AABU523

Sampling Date: 2021-08-26
Lab Batch Date: 2021-08-26
Completion Date: 2021-08-31

Initial Gross Weight: 50.583 g
Density: 0.983 g/ml

Pesticides

Specimen Weight: 191.100 mg

Passed
(LCMS/GCMS)

Dilution Factor: 7.849

Analyte	LOQ (ppb)	Action Level (ppb)	Result (ppb)	Analyte	LOQ (ppb)	Action Level (ppb)	Result (ppb)
Abamectin	28.23	300	<LOQ	Acephate	30	3000	<LOQ
Acequinocyl	48	2000	<LOQ	Acetamiprid	30	3000	<LOQ
Aldicarb	30	100	<LOQ	Azoxystrobin	10	3000	<LOQ
Bifenazate	30	3000	<LOQ	Bifenthrin	30	500	<LOQ
Carbaryl	10	500	<LOQ	Chlorfenapyr	48	100	<LOQ
Chlorpyrifos	30	100	<LOQ	Clofentazine	30	500	<LOQ
Coumaphos	30	100	<LOQ	Cyfluthrin	30	1000	<LOQ
Cypermethrin	30	1000	<LOQ	Daminozide	30	100	<LOQ
Diazinon	30	200	<LOQ	Dichlorvos	30	100	<LOQ
Dimethoate	30	100	<LOQ	Dimethomorph	30	3000	<LOQ
Ethoprophos	30	100	<LOQ	Etofenprox	30	100	<LOQ
Etoxazole	30	1500	<LOQ	Fenhexamid	30	3000	<LOQ
Fenoxycarb	30	100	<LOQ	Fenpyroximate	30	2000	<LOQ
Fipronil	30	100	<LOQ	Flonicamid	30	2000	<LOQ
Fludioxonil	30	3000	<LOQ	Hexythiazox	30	2000	<LOQ
Imazalil	30	100	<LOQ	Imidacloprid	30	3000	<LOQ
Kresoxim Methyl	30	1000	<LOQ	Malathion	30	2000	<LOQ
Metaxyl	10	3000	<LOQ	Methiocarb	30	100	<LOQ
Methomyl	30	100	<LOQ	Mevinphos	30	100	<LOQ
Myclobutanil	30	3000	<LOQ	Naled	30	500	<LOQ
Oxamyl	30	500	<LOQ	Pacllobutrazol	30	100	<LOQ
Parathion-methyl	48	100	<LOQ	Pentachloronitrobenzene	30	200	<LOQ
Permethrin	30	1000	<LOQ	Phosmet	30	200	<LOQ
Piperonylbutoxide	30	3000	<LOQ	Prallethrin	30	400	<LOQ
Propiconazole	30	1000	<LOQ	Propoxur	30	100	<LOQ
Pyrethrins	30	1000	<LOQ	Pyridaben	30	3000	<LOQ
Spinetoram	30	3000	<LOQ	Spiromesifen	30	3000	<LOQ
Spirotetramat	30	3000	<LOQ	Spiroxamine	30	100	<LOQ
Tebuconazole	30	1000	<LOQ	Thiacloprid	30	100	<LOQ
Thiamethoxam	30	1000	<LOQ	Trifloxystrobin	30	3000	<LOQ

Xueli Gao
Xueli Gao Lab Toxicologist
Ph.D., DABT

Aixia Sun
Aixia Sun Lab Director/Principal Scientist
D.H.Sc., M.Sc., B.Sc., MT (AAB)



Definitions and Abbreviations used in this report: *Total CBD = CBD + (CBD-A * 0.877), *Total THC = THCA-A * 0.877 + Delta 9 THC, *CBG Total = (CBGA * 0.877) + CBG, *CBN Total = (CBNA * 0.877) + CBN, *Other Cannabinoids Total = CBC + CBDV + THCV + THCV-A, *Total Detected Cannabinoids = CBD Total + CBG Total + CBN Total + THC Total + CBC + CBDV + THCV + THCV-A, *Analyte Details above show the Dry Weight Concentrations unless specified as 12% moisture concentration. (mg/ml) = Milligrams per Milliliter, LOQ = Limit of Quantitation, LOD = Limit of Detection, Dilution = Dilution Factor (ppb) = Parts per Billion, (%) = Percent, (cfu/g) = Colony Forming Unit per Gram (cfu/g) = Colony Forming Unit per Gram, , LOD = Limit of Detection, (µg/g) = Microgram per Gram (ppm) = Parts per Million, (ppm) = (µg/g), (aw) = aw (area ratio) = Area Ratio, (mg/Kg) = Milligram per Kilogram, *Measurement of Uncertainty = +/- 5%



This report shall not be reproduced, without written approval, from ACS Laboratory. The results of this report relate only to the material or product analyzed. Test results are confidential unless explicitly waived otherwise. Accredited by a third-party accrediting body as a competent testing laboratory pursuant to ISO/IEC 17025 of the International Organization for Standardization.



License No. 800025015
FL License # CMTL-0003
CLIA No. 10D1094068

Certificate of Analysis

Compliance Test

ABSOLUTE NATURE CBD
539 W. COMMERCE #786
DALLAS, TX 75208

Batch # OT-23021-B2
Batch Date: 2021-08-18
Extracted From: Hemp

Sampling Method: MSP 7.3.1
Test Reg State: Alaska

Order # ABS210823-040020
Order Date: 2021-08-23
Sample # AABU523

Sampling Date: 2021-08-26
Lab Batch Date: 2021-08-26
Completion Date: 2021-08-31

Initial Gross Weight: 50.583 g
Density: 0.983 g/ml

Residual Solvents - FL (CBD) Passed (GCMS)

Specimen Weight: 8.400 mg

Dilution Factor: 1.000

Analyte	LOQ (ppm)	Action Level (ppm)	Result (ppm)	Analyte	LOQ (ppm)	Action Level (ppm)	Result (ppm)
Acetone	2.08	5000	<LOQ	Benzene	0.02	2	<LOQ
Butanes	2.5	2000	<LOQ	Ethanol	2.78	5000	<LOQ
Ethyl Acetate	1.11	5000	<LOQ	Heptane	1.39	5000	<LOQ
Hexane	1.17	290	<LOQ	Isopropyl alcohol	1.39	500	<LOQ
Methanol	0.69	3000	<LOQ	Pentane	2.08	5000	<LOQ
Propane	5.83	2100	<LOQ	Toluene	2.92	890	<LOQ
Total Xylenes	2.92	2170	<LOQ				

Listeria Monocytogenes Passed (qPCR)

Specimen Weight: 979.400 mg

Dilution Factor: 1.000

Analyte	Action Level (cfu/g)	Result
Listeria Monocytogenes	1	Absence in 1g

Xueli Gao
Xueli Gao Lab Toxicologist
Ph.D., DABT

Aixia Sun
Aixia Sun Lab Director/Principal Scientist
D.H.Sc., M.Sc., B.Sc., MT (AAB)



Definitions and Abbreviations used in this report: *Total CBD = CBD + (CBD-A * 0.877), *Total THC = THCA-A * 0.877 + Delta 9 THC, *CBG Total = (CBGA * 0.877) + CBG, *CBN Total = (CBNA * 0.877) + CBN, *Other Cannabinoids Total = CBC + CBDV + THCV + THCV-A, *Total Detected Cannabinoids = CBD Total + CBG Total + CBN Total + THC Total + CBC + CBDV + THCV + THCV-A, *Analyte Details above show the Dry Weight Concentrations unless specified as 12% moisture concentration. (mg/ml) = Milligrams per Milliliter, LOQ = Limit of Quantitation, LOD = Limit of Detection, Dilution = Dilution Factor (ppb) = Parts per Billion, (%) = Percent, (cfu/g) = Colony Forming Unit per Gram (cfu/g) = Colony Forming Unit per Gram, , LOD = Limit of Detection, (µg/g) = Microgram per Gram (ppm) = Parts per Million, (ppm) = (µg/g), (aw) = aw (area ratio) = Area Ratio, (mg/Kg) = Milligram per Kilogram, *Measurement of Uncertainty = +/- 5%



This report shall not be reproduced, without written approval, from ACS Laboratory. The results of this report relate only to the material or product analyzed. Test results are confidential unless explicitly waived otherwise. Accredited by a third-party accrediting body as a competent testing laboratory pursuant to ISO/IEC 17025 of the International Organization for Standardization.



License No. 800025015
FL License # CMTL-0003
CLIA No. 10D1094068

Certificate of Analysis

Compliance Test

ABSOLUTE NATURE CBD
539 W. COMMERCE #786
DALLAS, TX 75208

Batch # OT-23021-B2
Batch Date: 2021-08-18
Extracted From: Hemp

Sampling Method: MSP 7.3.1
Test Reg State: Alaska

Order # ABS210823-040020
Order Date: 2021-08-23
Sample # AABU523

Sampling Date: 2021-08-26
Lab Batch Date: 2021-08-26
Completion Date: 2021-08-31

Initial Gross Weight: 50.583 g
Density: 0.983 g/ml

Pathogenic SAE (qPCR)

Specimen Weight: 220.760 mg

Passed
(qPCR)

Dilution Factor: 1.000

Analyte	Action Level (cfu/g)	Result (cfu/g)	Analyte	Action Level (cfu/g)	Result (cfu/g)
Aspergillus (Flavus, Fumigatus, Niger, Terreus)	1	Absence in 1g	E.Coli	1	Absence in 1g
			Salmonella	1	Absence in 1g

Xueli Gao
Xueli Gao Lab Toxicologist
Ph.D., DABT

Aixia Sun
Aixia Sun Lab Director/Principal Scientist
D.H.Sc., M.Sc., B.Sc., MT (AAB)



Definitions and Abbreviations used in this report: *Total CBD = CBD + (CBD-A * 0.877), *Total THC = THCA-A * 0.877 + Delta 9 THC, *CBG Total = (CBGA * 0.877) + CBG, *CBN Total = (CBNA * 0.877) + CBN, *Other Cannabinoids Total = CBC + CBDV + THCV + THCV-A, *Total Detected Cannabinoids = CBD Total + CBG Total + CBN Total + THC Total + CBC + CBDV + THCV + THCV-A, *Analyte Details above show the Dry Weight Concentrations unless specified as 12% moisture concentration. (mg/ml) = Milligrams per Milliliter, LOQ = Limit of Quantitation, LOD = Limit of Detection, Dilution = Dilution Factor (ppb) = Parts per Billion, (%) = Percent, (cfu/g) = Colony Forming Unit per Gram (cfu/g) = Colony Forming Unit per Gram, , LOD = Limit of Detection, (µg/g) = Microgram per Gram (ppm) = Parts per Million, (ppm) = (µg/g), (aw) = aw (area ratio) = Area Ratio, (mg/Kg) = Milligram per Kilogram, *Measurement of Uncertainty = +/- 5%



This report shall not be reproduced, without written approval, from ACS Laboratory. The results of this report relate only to the material or product analyzed. Test results are confidential unless explicitly waived otherwise. Accredited by a third-party accrediting body as a competent testing laboratory pursuant to ISO/IEC 17025 of the International Organization for Standardization.